



# SK 140PP POWER PACK



## SK140PP

---

<b>Engine</b>	C4.4 Tier 4 Final, EU Stage IV
<b>Engine Power</b>	104.39 kW      140 hp
<b>Weight</b>	7565 lbs

# SK 140PP POWER PACK

## Specifications

### Capacities:

Hydraulic 46.5 gallons  
Fuel 70 gallons

### Hydraulic System:

Pump 75 cc  
Flow 40 gpm @ 2200 RPM  
Max Pressure 5500 psi  
Circuit Type Closed Loop

### Dimensions:

Height 60.8"  
Width 99.2"  
Length: 53.3"

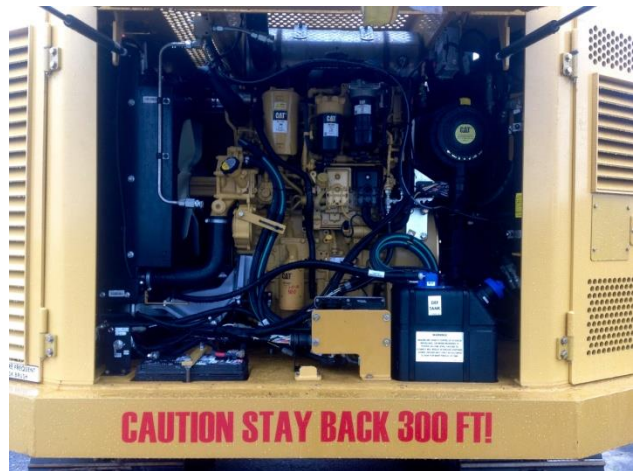


**Filtration** High Pressure Filters  
Remote Charge Filter  
Surge Protection  
1 Gallon accumulator

**Cooling:** Heavy duty Radiator Oil Cooler  
Extra Large intake area  
Roof louvers  
Optional debris screens

**Enclosure:** Robust Engine/Service doors

**Controls:** In cab controls with display  
engine and hydraulic diagnostics.



26855 Airport Road  
Punta Gorda, Florida 33982  
1 800 446 9858  
1 941 505 7800  
[www.supertrak.com](http://www.supertrak.com)