

930 MULCHER



305 HP No-Nonsense Mulcher

The Barko series 930 Mulcher is designed for the most demanding right-of-way land clearing and site prep applications. The 930 is the top mulcher for large commercial and municipal applications. Featuring a powerful, industry-leading 305hp diesel engine, a highly maneuverable carrier with heavy-duty hydrostatic drive, and efficient load-sensing hydraulics. The Barko 930 has no equal.

- Excellent power, lift and drive capability - uncompromising 305 hp carrier.
- Strong, durable carrier—built to withstand extreme stress and tough terrain.
- Superior fuel efficiency—large tank, fill up less often, save time and money.
- Standard in-cab hydraulic pressure diagnostics.
- Heavy-duty hydrostatic transmission—responsive, easy handling, excellent maneuverability.
- Ergonomic work station—all-day operator comfort and efficiency. Absolute best 360° visibility in the industry.
- High capacity cooling package—extends engine/component life. Operate in hot environments.
- Auto-reversing cooling fan.

The standard for mulchers has been re-written—the Barko 930 Mulcher does it all.

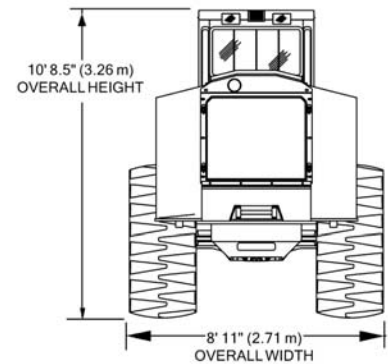
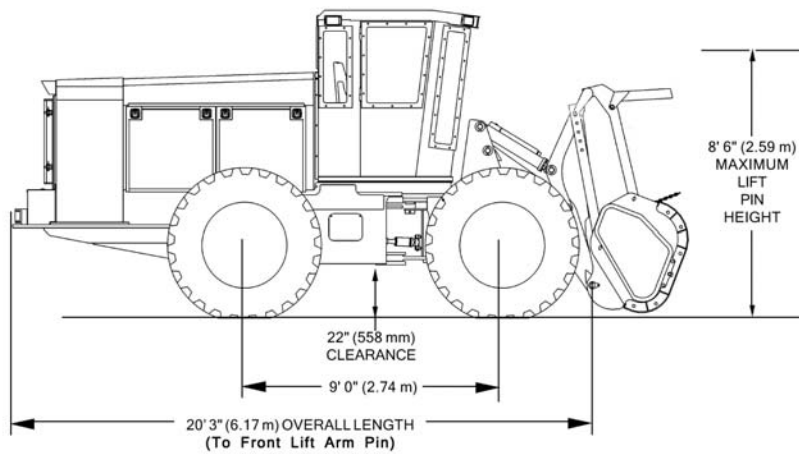


BARKO HYDRAULICS, LLC

One Banks Avenue • Superior, Wisconsin 54880
715.392.5641 • Fax 715.392.3931 • www.Barko.com

BARKO 930 MULCHER

STANDARD SPECIFICATIONS & FEATURES



Engine
 Make: Cummins
 Model: QSC 8.3 L
 Horsepower: 305 (227 Kw)
 RPM: 2200
 Bore & Stroke: 4.49 x 5.31
 (114 mmx135 mm)
 Number of Cylinders: 6
 Electrical System: 12 Volt
 Fuel Tank Capacity: 126 gal (477L)
 Air Cleaner: Dual Element DryType
 Exhaust System: Muffler (with fire wrap)
 Radiator: High Capacity Anti-Clog Type
 (with automatic reversing fan)

Axles
 Type: All wheel drive planetary axles.
 Front: Rigid with hydraulic differential lock.
 Rear: Oscillation type with hydraulic differential lock.
 Articulation: 45° with 28L tires.

Hydrostatic transmission
 Variable displacement pump and motor with pilot operated foot controls, combined with a two-speed transfer case to provide an ideal combination of torque and speed range.

Wheels and Tires
 Standard: (107" Machine Width) 28L - 26 20 ply with 25 x 26 reinforced wheels. Optional: 68x50-32, 23.1-26 10-ply (8' 6" shipping width)

Brake
 Service/Emergency: Hydrostatic-dynamic front axle internal wet disc with foot pedal in cab.

Parking
 Switch operated control on dash with wet disc brakes, located on drive line at transmission.

Lift/Tilt/Steer Pump:
 Variable displacement, load sensing piston pump producing 42 GPM (159 L/min) @ 3,600 PSI (24,821 kPa).

Travel pump:
 Variable displacement piston pump producing a maximum of 52 GPM (197 L/min) @ 5000 PSI (34,474 kPa).

Mulcher Drive Pump:
 Variable displacement piston pump producing a maximum of 96 GPM (364 L/min) @ 4800 PSI (33,095 kPa). High Pressure Return Filter 270 Theoretical Hydraulic Horsepower.

Filtration system has 33 Micron filters.
 87 gallon (329 L) hydraulic reservoir.

Oil Cooler: High capacity integrated with Radiator and Charge Air Cooler.

Steering
 Joystick controlled.
 Turning radius: 15' 9" (4.80 m) outside tires. Larger tires increase turning radius.

Travel Speeds w/28L - 26 tires
 Low gear 0-5.0 MPH (0-8.0 kmh)
 High gear 0-13.0 MPH (0-20.9 kmh)

Electrical
 12 volt starting system.
 140 amp alternator
 Ignition key

Power view display:
 -engine oil pressure
 -engine RPM
 -engine load %
 -hour meter
 -engine temperature
 -volt meter

-Audio/visual warning system:
 -engine oil pressure
 -engine temperature

Analog Audio/visual warning system:
 -hydraulic oil temperature
 -low hydraulic oil level
 -park brake
 -differential lock engaged
 -high pressure filter service
 -mulcher pump filter service
 -drive filter service.
 -Fuel level

Operators Cab
 Excellent visibility, ergonomically designed layout for operator comfort and ease of control, sound

insulation, ROPS, FOPS and OPS certified, defroster, air conditioning, deluxe adjustable bucket seat with 4 point harness, tinted lexan windows, three front mounted cab lights, two front side mounted cab lights, two rear mounted cab lights, two rear side mounted cab lights, AM/FM radio, cd player, and fire extinguisher. Air Knife on front windshield for dust and debris removal. Sealed and pressurized with cyclonic filter.

Left hand joystick for steering with 5 push buttons.

Right hand joystick for lift and tilt with 5 push buttons.

Buttons for horn, front differential lock, low lock, float on/off, float override, gate, push bar, plus 1 extra button can be arranged to suit the end user.

Pilot operated double foot pedal for travel.

Foot operated hydraulic service, emergency brake.

Electronic hydraulic pressure diagnostics on the cab instrument panel

Service Features
 Grouped single point remote grease fittings for steering cylinders and axles.

Side panels are lockable and removable.

Brake and transmission side, front and bottom covers are removable for ease of service.

Weight without attachment 30,000 lbs.

Hydraulic Cylinders			
	Bore	Rod	Stroke
Lift Cylinders	4" (102mm)	2.5" (63.5mm)	19.13" (486mm)
Tilt Cylinders	4" (102mm)	2.5" (63.5mm)	22.5" (571mm)
Steering Cylinders	3" (76.2mm)	1.75" (44.5mm)	13.0" (330mm)

Optional Equipment
 Hydraulic Winch - 20,000 lbs capacity

AFEX automatic fire suppression system



BARKO HYDRAULICS, LLC

One Banks Avenue • Superior, Wisconsin 54880
 715.392.5641 • Fax 715.392.3931 • www.Barko.com

Barko Hydraulics reserves the right to change specifications and prices without notice in order to follow its policy of constantly striving to manufacture a better product without incurring any liability to provide these new features on any units previously manufactured.